



**ST. MINVER**  
community hub

**Welcome to St Minver Community Hub,**  
a Charitable Incorporated Organisation  
formed in January 2019!



**To achieve this we need  
your help and support.**



**[www.stminvercommunityhub.org.uk](http://www.stminvercommunityhub.org.uk)**

# The new St Minver Community Hub



**Our vision** is to provide a new community hub and meeting place that meets the needs of the existing users and provides comprehensive facilities for all of the local community.

**Our plan** is to develop the existing Football Club, Guide and Scout Groups at Trewint Playing Fields and add additional facilities such as a café; meeting rooms; a venue for hire, a permanent health hub and a Parish Council Chamber. The new Hub will be self-funding, sustainable and meet the needs of future generations.

**Despite the pandemic restricting activities, the past year has seen fund raising reach the £100,000 mark.**

The first visible phase of the project is the Interim Health Hub that is now up and running at a total cost of just under £24,000. The generosity of local people, recognising the value of this facility to the community, enabled funding specifically aimed at this phase to raise this sum in just a few months. The Doctor's Practice is now paying for the use of the Health Hub and this is fully covering the ongoing running costs.

## Interim Health Hub

Following a review of the existing plans the estimated cost for completing all the sequential phases of the Community Hub project comprising the Interim Health Hub, moving the football pitch, build of the Community Hub, provision of a stand-alone storage and public toilet block, removal of redundant buildings, revamping the carpark and general landscaping is now £750,000.

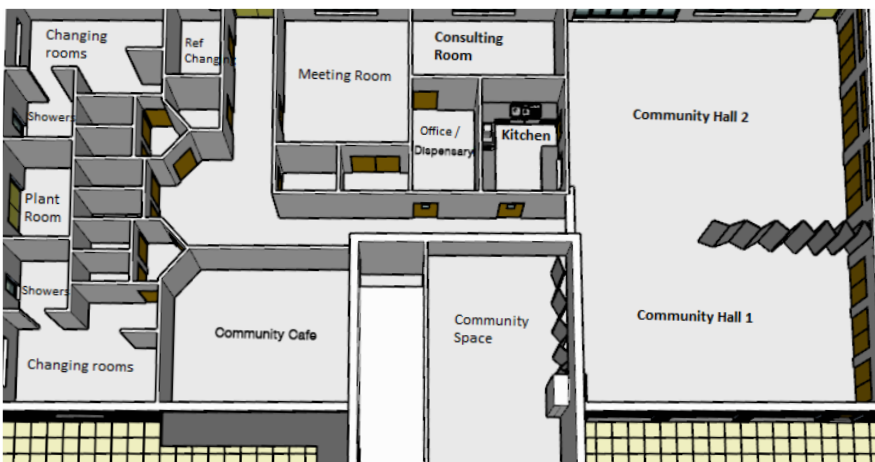


The next phase, build of the Community Hub, requires cumulative funding of £550,000.

Grant funding is potentially available and is being actively pursued. However, in many cases it is dependent on matched funding or visibility that at least 50% of the funding has been realised. Therefore, there is an urgent need to achieve the next financial goal of cumulative funding exceeding £250,000.

## The new St Minver Community Hub and Football Pitch

### St Minver Community Hub Internal Layout



**Like you we are proud of our lovely community and want to ensure that it continues to thrive and meet the needs of all age groups within the local area.**

The new Community Hub will provide a focal point for members of the local community whether local resident, second homeowner or regular visitor. It will be a place where people can meet, socialise, learn new skills, share knowledge, and have fun.

We will be incredibly grateful for any support you can provide to help us raise the funds required.

For further information please visit our website:  
[www.stminvercommunityhub.org.uk](http://www.stminvercommunityhub.org.uk)

To join our Facebook page:  
[www.facebook.com/stminvercommunityhub](http://www.facebook.com/stminvercommunityhub)



To receive the latest news join our mailing list:  
[www.stminvercommunityhub.org.uk/sign-up](http://www.stminvercommunityhub.org.uk/sign-up)

[www.stminvercommunityhub.org.uk/donate](http://www.stminvercommunityhub.org.uk/donate)



**ST. MINVER**  
community hub